

1

2019 1

REITs

2019

REITs

- -

] ? 1 J0 Cp † & B † Y ÷ Y † ? 1 J0 Cp † hS" † Y † 2019 A'ěň Vñ Ux@!• ñèRU

2019

2

3 28

3

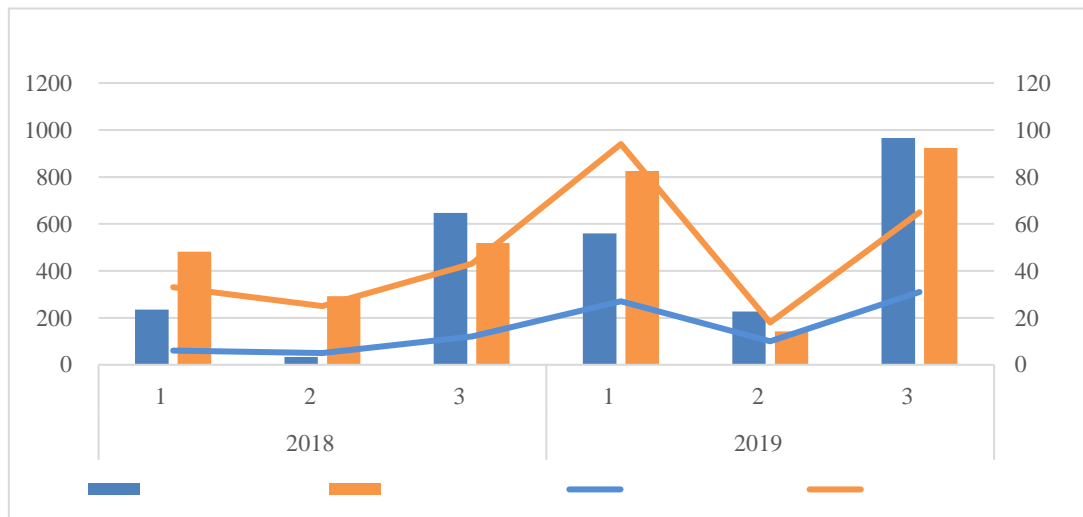
A-3

2014

2019

2019 3

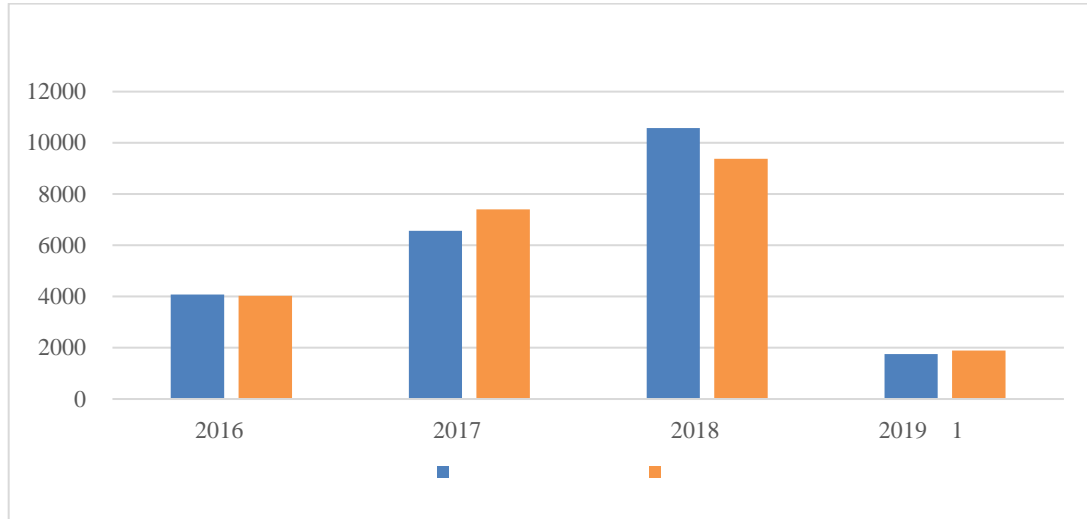
96	281	78	205	41	92
1888.37	1518.73	722.40			



o

2018/2019 1 -3

2019
 245 658 1 121 284 126 375
 3642.36 1434.56 3816.67



2 2016 -2019 1
 2019 1 68 198 45 129
 46 124 1751.60
 177 460 80 251 76 155
 1890.76 2

1

2019 1	68	177	198	460	1751.60	1890.76
2018 4	114	257	322	711	4309.31	3149.72
2018 1	23	101	69	305	916.01	1291.79

2019 3

200.87

15

1

2

2 2019 3

	()		()		()	
	200.87	12	153.39	9	47.48	3
	175.46	15	82.01	4	93.45	11
	157.12	12	69.46	3	87.66	9
	110.51	5	76.19	2	34.32	3
	102.59	3	102.59	3	0.00	0
	98.35	1	0.00	0	98.35	1
	88.58	7	53.58	4	35.00	3
	71.50	5	0.00	0	71.50	5
	65.18	2	0.00	0	65.18	2
	62.00	3	25.50	2	36.51	1

。

2019 1

413.27 40

2019

2019

2019

- -

3

-

6

3 2019 1

	()		()		()	
	413.27	40	153.50	7	259.77	33
	343.50	20	256.50	13	87.00	7
	213.00	32	0.00	0	213.00	32
	207.51	15	89.85	4	117.66	11
	156.28	15	79.74	8	76.53	7
	142.32	6	142.32	6	0.00	0
	141.44	22	70.43	9	71.01	13
	127.39	18	90.12	9	37.27	9
	126.71	7	76.19	2	50.52	5
	102.70	14	11.63	3	91.06	11

•

2019 3

489.43

303.59

4 2019 3

RMBS	4	13	489.43
	8	29	303.59
	22	84	266.27
	4		

	26	48	165.6
	12	51	159.66
	10	29	118.04
	2	6	116.76
CLO	2	6	78.16
	9	21	72.34
	3	16	71.58
	3	12	59.49
CMBS)	4	7	51.74
REITs	4	9	45.62
	2	4	40.00
PPP	1	2	17.32
	1	2	7.50
	2	4	3.88
	245	658	3642.36

°
°

3

2019 3 281 171 AAA
44.84% 81.79%

2019 1 658 414
AAA 49.24% AAA
2952.30 81.05%

6 2019 1

		%	()	%
AAA	324	49.24%	2952.30	81.05%
AA+	65	9.88%	155.08	4.26%
AA	19	2.89%	27.56	0.76%
AA-	1	0.15%	0.36	0.01%
A+	2	0.30%	0.47	0.01%
A-	1	0.15%	0.77	0.02%

BBB-	2	0.30%	1.00	0.03%
	244	37.08%	504.83	13.86%
	658	100.00%	3642.36	100.00%

2019 3 9503 9807.35
 AAA 4176 7559.94
 43.94% 77.08%

2019 1 2 4
 7

7 2019 1

L	B	2017		BBB-	2019/1/30	AAA	2018/6/25
18	B1	-	-	AAA	2019/3/29	AA	2018/8/31
18	B2			AAA	2019/3/29	AA	2018/8/31
18	B3			AAA	2019/3/29	AA	2018/8/31

1 2 11 2019
 2 28 2 12
 4B 4
 2 14 2 2 20
 2A1 2B1 2B2 2 2 26
 3 3 25 1
 A2 B

2019 1 AAA AA+ AA 244BP 326BP
 388BP AAA 11BP 12BP AA+ AA
 8BP 56BP 2BP 48BP AAA
 AA+ 82BP 19BP 10BP AA+ AA
 62BP 48BP 46BP AAA AA+

6

8 2019 1

		%	BP	BP	BP	
AAA	305	5.00	58~562	244		0.51
AA+	62	5.83	82~955	326	82	0.53
AA	18	6.49	148~639	388	62	0.32

。

9 2019 1

		%	BP	BP	BP	
AAA	85	4.43	58~			