



2019-1	01	19	01	19	GN001	19
2019 1	12	173.68				
2019 1						
1 8						
1 8						
1 16	2018	851	A		CSR	
1 18						
1 21						
1 21						

 联合资信评估有限公司
China Lianhe Credit Rating Co.,Ltd.



2 PICC 17
100022
010-85679696
www.lhratings.com
lianhe@lhratings.com

 联合信用评级有限公司
United Credit Ratings Co.,Ltd.



2 PICC 10
100022
010-85172818
www.lianhecreditrating.com.cn
lh@unitedratings.com.cn



4



19	GN001	2019/1/24	10	3	5.60	-		PPN
19	01	2019/1/21	10	3+2	4.25	AA+/AA+		
19	01	2019/1/21	16	5+5	4.02	AAA/AAA		
19	01	2019/1/15	30	5	3.90	AAA/AAA		
G19	1	2019/1/16	5	3	4.80	-		
19	01	2019/1/29	2	3	3.90	AA/AA		
19	01	2019/1/23	15	3	3.70	AA+/AA+		
19	01	2019/1/21	20	3	3.50	AAA/AAA		
2019-1		2019/1/7	15.68	0.55-3.05	4.20-5.00	AAA		ABN
2019-1		2019/1/21	30	0.99-4.99	3.60-4.10	AAA		ABN

COS

2 1

2019 1
80.00%

5

4

2 2019 1

				%			%	BP
19	01	2019/1/18	5	3.90	AAA		7.25	-335.00
19	01	2019/1/24	5	4.02	AAA		7.25	-323.00
19	MTN001	2019/1/30	3	3.58	AAA		4.04	-45.93
19	01	2019/1/30	3	3.90	AA		4.00	-10.00
19	01	2019/1/23	3	3.50	AAA		3.48	2.50

COS



1

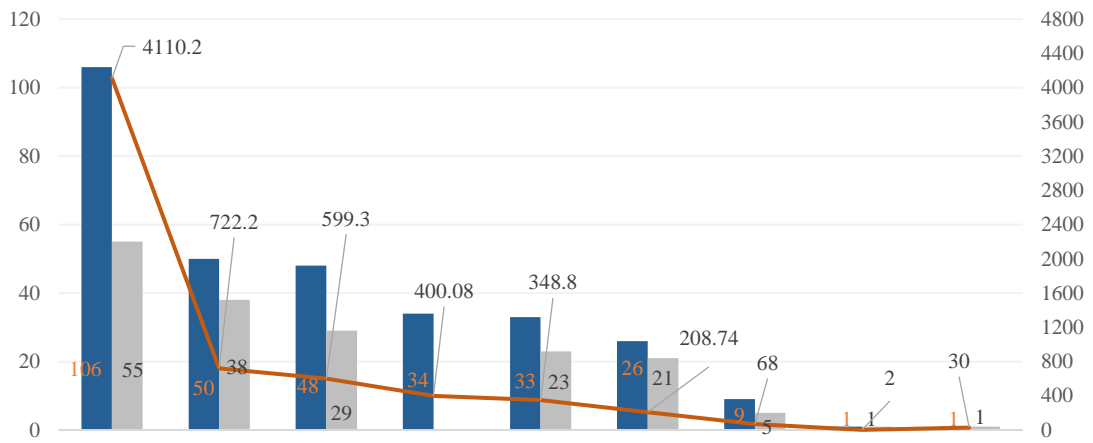
2016 ~2019 1 31 165 274
 6089.24 34 400.08
 3 2016 ~2019 1

	2016	2017	2018	2019 1
	49	104	111	10
	29	68	88	10
	1985.30	1908.75	2067.19	128.00
	4.35	4.34	3.87	4.63
%	87.76	69.23	74.8	60.00
%	77.78	63.27	60.81	80.00

COS

2 2016 ~2019 1

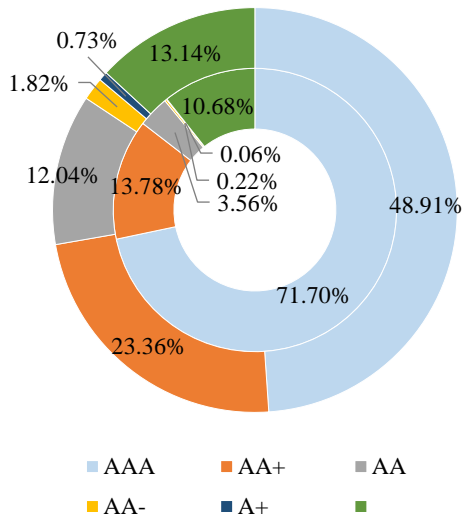
1



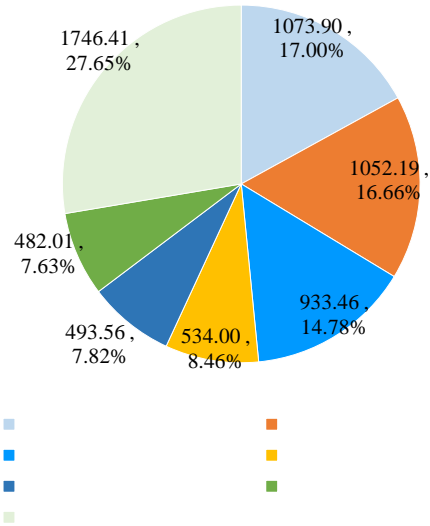
COS



2



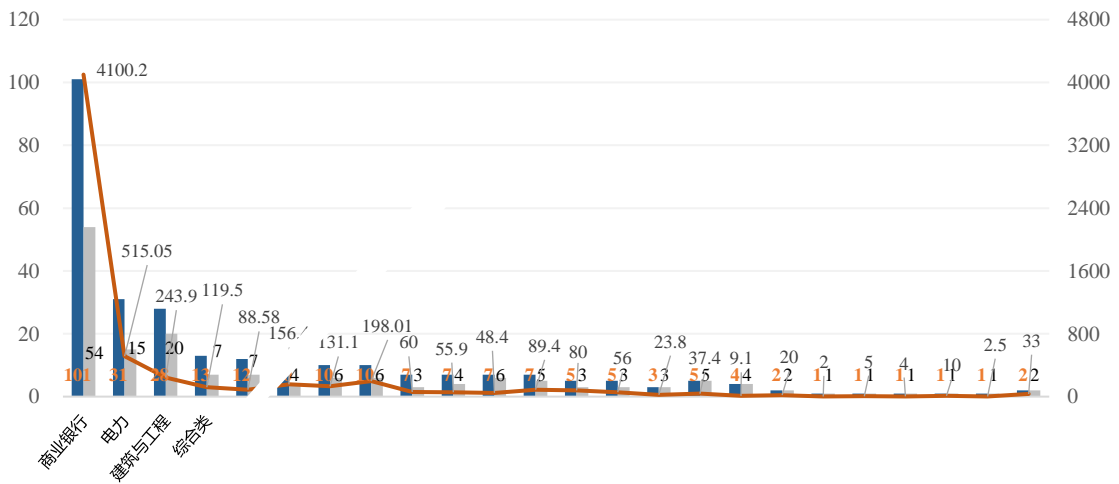
3



COS

COS

4

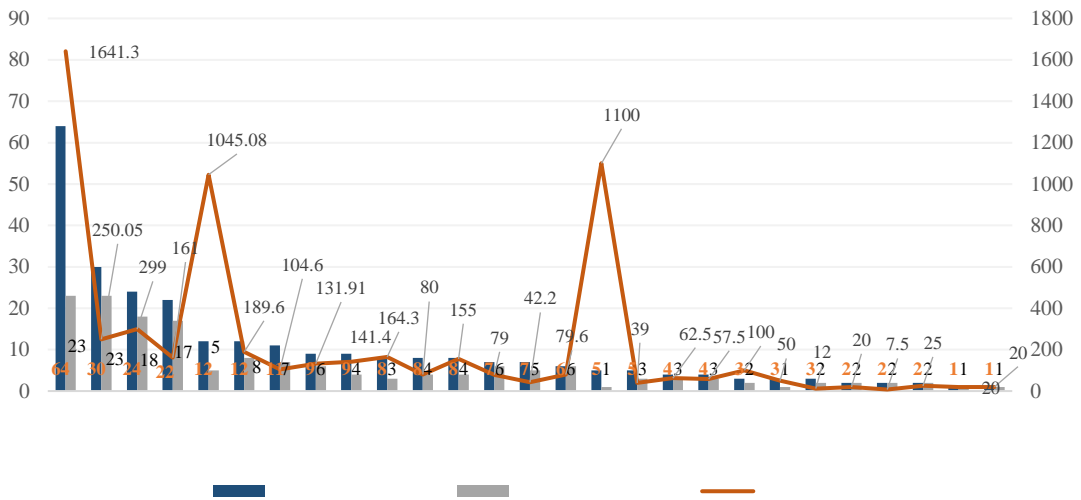


Wind

COS

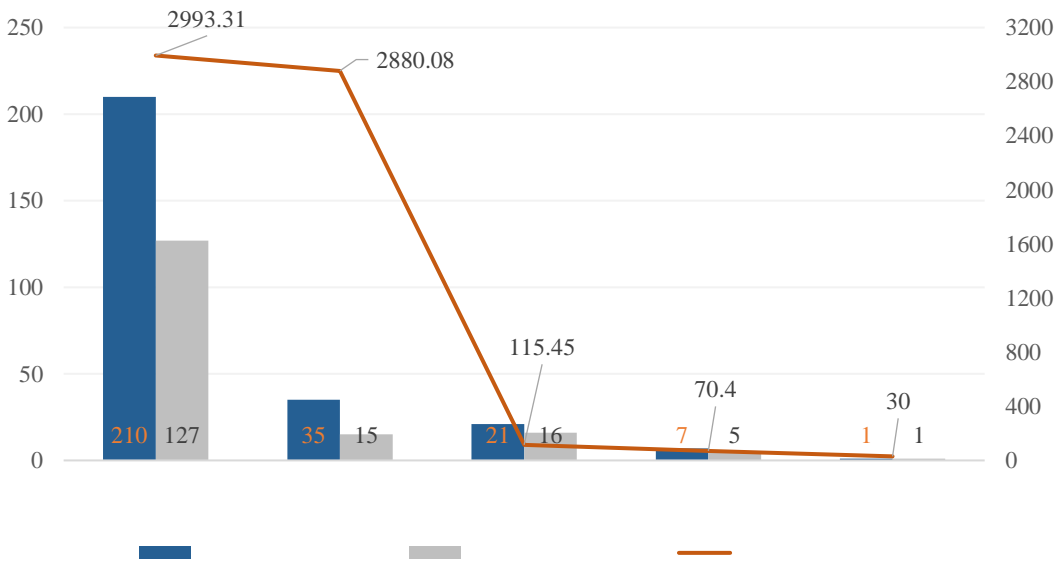


5



COS

6



COS



1 8

"

10%

20%

100 "

" 1+4"

2017 7

10

2018 10

2018

20

2019 1 14

50

1 8

50

2019 1 16

2%

1 18

" "

" "

"

G1 G2 G3 G4

5 3

1‰ 0.5‰

3

1‰

2019

1 21



1 21

" "

G20

24

" "

2019 1 25

1 21

" " " "

2019 1 26

2018 851 A

CSR

1 16

RKS

2018

A

2009-2018

A

129%

48

2018

851 A

CSR

CSR

ESG

ESG

2018

ESG

2019 1 28