



### 绿色债券发行量继续增加，绿色债券统一标准出台可期

GN001	19	02	GN001	19
01			2019-1	
2019 3	20		214.52	
2019 1~3	34			
37	412.34			
	5		93.96	
2019 3				
3 6				
3 25				
3 27				
3 29				

联合资信评估有限公司  
China Lianhe Credit Rating Co.,Ltd.



2 PICC 17  
100022  
010-85679696  
www.lhratings.com  
lianhe@lhratings.com

联合信用评级有限公司  
United Credit Ratings Co.,Ltd.



2 PICC 10  
100022  
010-85172818  
www.lianhecreditrating.com.cn  
lh@unitedratings.com.cn



2019 3 6  
2019

<https://www.chinabond.com.cn/cb/cn/yjfx/jgzs/lhzx/20190318/151087367.shtml>

2019 3 18



**5**

2019 3 19 GN001 19  
GN001 19 02 19



136.50

6

50.00

2019-1

1 2019 3

					%	/		
19 GN001		2019/3/4	30	5	4.40	AAA/AAA		
19 GN001		2019/3/12	20	5	4.18	AAA/AAA		
19 中		2019/3/22	10	5+5	5.49	AAA/AAA		交
19 NPB01	中	2019/3/5	3	5+5	4.50	AA+/AA+		交
19 02		2019/3/26	10	3+2	4.25	AA+/AA+		交
G19 1		2019/3/20	10	3	3.85	AAA/AAA		
19 G1		2019/3/14	5	3+2	4.20	AAA/AA+		
G19 1		2019/3/14	6	2+1	7.00	AAA/AA		
G19 1		2019/3/19	3	2+1	6.50	AA/AA		
G19 1		2019/3/26	12	3+2	6.00	AA/AA		
G19 1		2019/3/8	15	3+2	4.59	-		
G19 1		2019/3/21	5	3+2	7.50	-		
G19 1		2019/3/22	6.24	3+2	6.20	-		
19 01		2019/3/4	10	3	3.75	AA+/AA+		
19 02		2019/3/5	15	3	3.70	AA+/AA+		



19	01		2019/3/19	6	3	3.62	AA+/AA+		
19	01		2019/3/22	5	3	3.75	AA/AA		
19	01		2019/3/28	2	3	4.30	A+/A+		
2019-1	-		2019/3/1	9.70	1.39~3.56	3.15~5.00	AAA		ABS)
2019-1	-		2019/3/15	31.58	0.77~4.77	3.40~4.05	AAA		( ABS)

COS

2 3

2019 3  
61.54%

13

8

2 2019 3

				%			%	BP
G19	1		2019/3/28	3+2	6.00	AA	7.42	-142.00
G19	1		2019/3/22	2+1	6.50	AA	7.77	-126.67
G19	1		2019/3/22	3	3.85	AAA	4.39	-53.81
19	GN001		2019/3/14	5	4.18	AAA	4.35	-16.71
19	02		2019/3/27	3+2	4.25	AA+	交 4.38	-13.00
19	01		2019/3/26	3	3.75	AA	3.85	-10.00
19	G1		2019/3/18	3+2	4.20	AAA	4.27	-6.96
19	01		2019/3/21	3	3.62	AA+	3.64	-2.33
	02		2019/3/7	3	3.70	AA+	3.66	4.00
19	01		2019/3/6	3	3.75	AA+	3.66	9.00



1  
2019 1~3 34  
37 412.34 17 15  
168.10 20  
2019 1~3 5  
93.96 2 12.85  
2016 ~2019 3 31 178 301  
6373.58 37 448.36  
3 2016 ~2019 3

	2016	2017	2018	2019 1~3
	49	104		



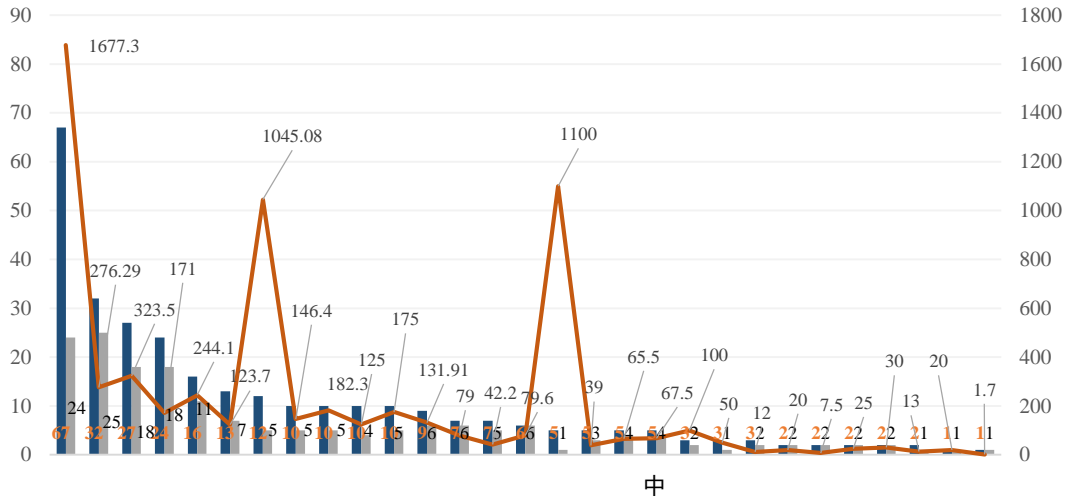
2

3

COS

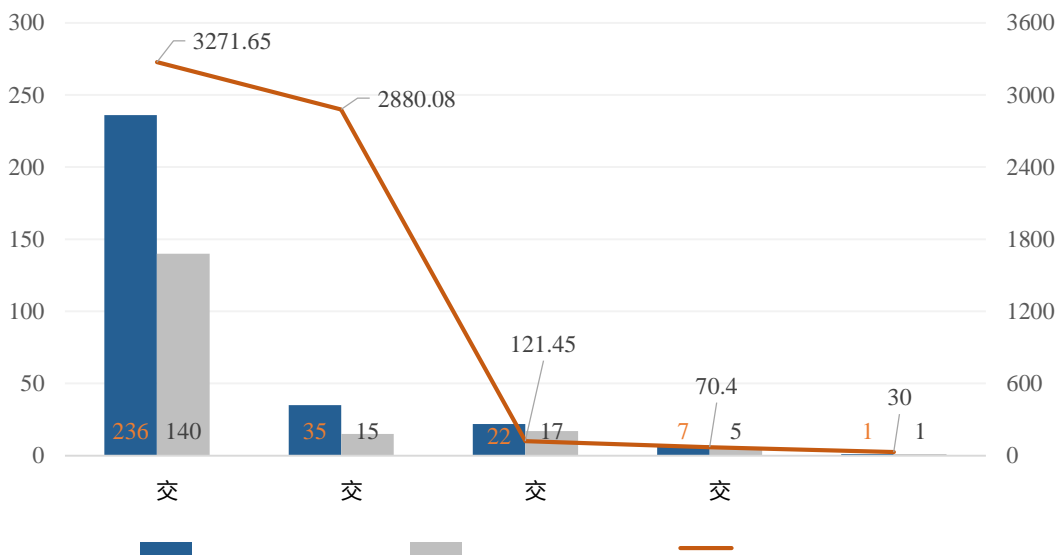


5



COS

6



COS



3 6

2019

30

210

3 7

2019 3 8

3 25

2019

34

60

2019

2019

2020

2019 3 27

3 27

ABS

2017 9

2018 6

2019 3 28





3 29

2019 3 29