

2020

1

A_i+

A_i+

A_i+

A_i+

2020 11 18

"

"

"

"

A_i+

"

"

"

"

2019

4

11

"

"

"

"

2019

2.0%

2013

0.7%

3.2%

2.8%

2012

2020

2019 4

100

2020

13%

17%

1.

GDP

	2019		2019
GDP	29,993.1		
	2019	75.3	141
	3		23
	76% #T6wÁBhCV+e0EÚ	68%	GDP
	67%		

2.

2019		76.2		A ₁ +
	2020		2019 4	
		2020	" "	

3.

2012		2019	GDP	2.1%
0.2	2020			0.5%

2018

90%

2020

- 1.
- 2.
- 3.

- 1.
- 2.

	V3.0.201910
	V3.0.201910

	A _i +		A _i +
	A _i +		A _i +
	B		C
			B
			F

lianhe@lhratings.com

010-85679696

010-85679228

2

17 100022

www.lhratings.com

1

2015-2019

	2019	2018	2017	2016	2015
GDP	12,453.3	12,021.9	11,618.8	11,138.4	10,775.9
GDP	13,942.7	14,203.8	13,120.9	12,325.7	11,957.2
GDP %	2.0	2.4	2.9	3.0	3.8
CPI %	0.7	1.7	2.0	-0.2	-0.5
%	14.1	15.3	17.2	19.6	22.1

		7,395.6	6,763.6	6,846.1	5,833.7	6,005.2
/	%	31.2	29.2	29.3	29.4	30.3
/	%	24.2	25.8	23.4	25.1	24.1
/	%	77.6	88.2	80.0	85.2	79.6

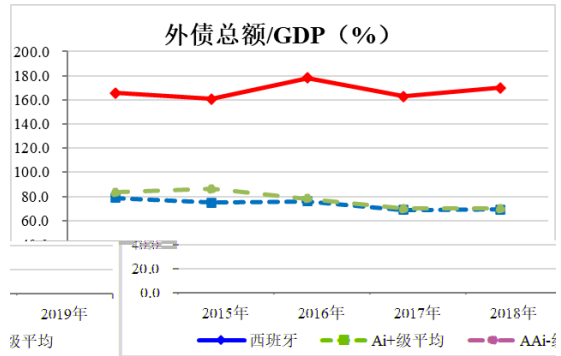
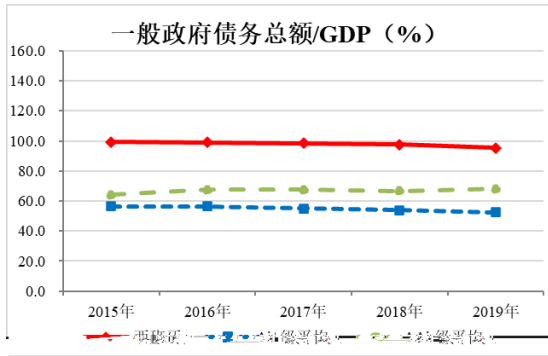
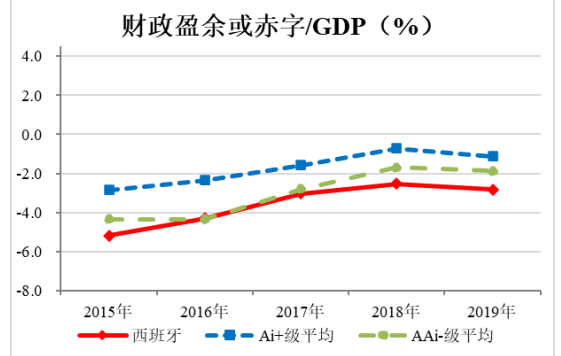
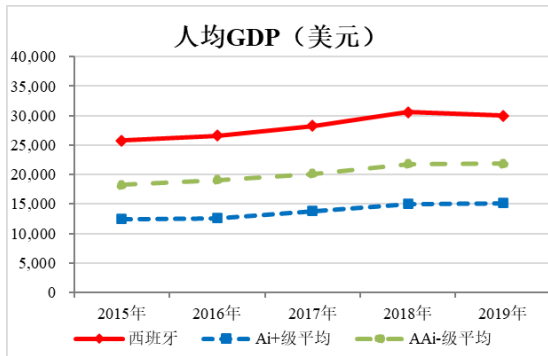
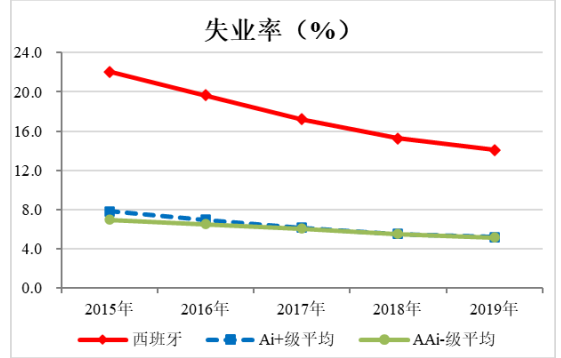
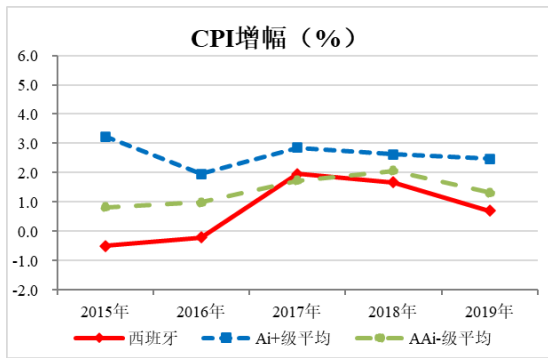
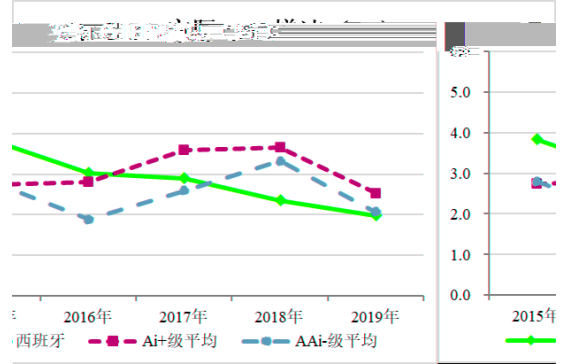
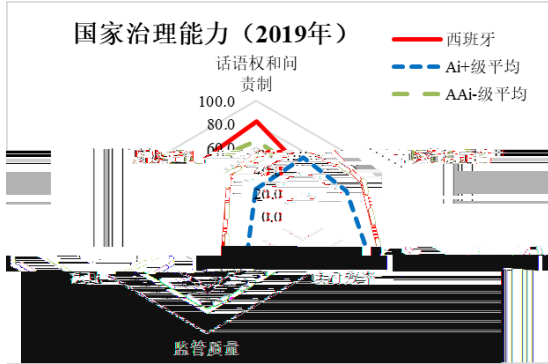
IMF

2 2020-2021

		2020	2020	2020	2021
GDP	%	-4.2	-21.5	-12.8	6.3
CPI	%	0.7	-0.6	-0.2	0.8
	%	14.0	15.5	16.8	16.8
GDP		26,273.8	24,890.1	26,831.6	31,178.2
/GDP	%	-	-	-14.1	-7.5
/GDP	%	98.8	110.1	123.0	121.3
/GDP	%	-0.1	0.1	0.5	0.9
/GDP	%	188.8	170.3	206.6	200.3

IMF

2



IMF

3

AAA_i AA_i A_i BBB_i BB_i B_i CCG_i CC_i C_i
 D_i AAA_i CCG_i " + " " - "

	AAA _i
	AA _i
	A _i
	BBB _i
	BB _i
	B _i
	CCG _i
	CC _i
	C _i
	D _i