

AA_i

2019

2019

2020

10

10

500

2021

5%

1.

2019 5 29

10

3

2020 10 1

7

500

2019

84.3

	AA _i	AA _i +					
2.			GDP				
						GDP	
2019		GDP	46,237				
	AA _i						
			2019		76.6	141	
21		20/140					
3.							
			GDP		50%	2019	50.4%
					25%	2019	
	26.5%						152.7%
							10%
1.							
	175		520			GDP	16%
						2020	
2019	1.9%		11%	2021		6%	

2.

2019		12,984.7	GDP	245.1%
10	AA _i +	AA _i		
	41%			
		27%		

3.

		2020		2021
2018				
	2019	GDP	0.1	1.4%
				AA _i
	2.6%	1.5%	2020	3 18
		5		2020
GDP	2.0%			

1

2015-2019

		2019	2018	2017	2016	2015
GDP		4,730.9	4,595.3	4,459.6	4,302.3	4,167.0
GDP		5,296.7	5,429.3	5,036.1	4,760.9	4,623.8
GDP	%	1.4	1.5	1.9	1.5	2.0
CPI	%	1.2	2.3	2.2	1.8	0.6
	%	5.4	6.0	7.1	7.8	8.5
GDP		46,237	47,632	44,364	42,091	41,147
GDP	%	74.4	74.7	74.5	74.6	75.0
GDP	%	25.0	25.5	24.5	24.3	23.6
GDP	%	0.6	-0.3	1.0	1.2	1.4
GDP	%	0.4	0.5	0.6	0.6	0.7
GDP	%	19.0	19.1	19.3	19.3	19.7
GDP	%	69.7	69.5	69.3	69.3	69.2
GDP	%	10.8	10.8	10.8	10.7	10.4
	%	18.8	18.8	19.0	18.8	18.7
	%	2.1	2.3	2.9	3.4	3.8
ROA	%	0.6	0.6	0.6	0.6	0.7
ROE	%	8.8	8.2	8.9	9.4	10.2
		2,382.7	2,363.3	2,284.6	2,182.6	2,137.9
/GDP	%	50.4	51.4	51.2	50.7	51.3
		2,473.0	2,400.5	2,315.4	2,284.3	2,238.5
/GDP	%	52.3	52.2	51.9	53.1	53.7
		-90.3	-37.1	-30.8	-101.7	-100.6
/GDP	%	-1.9	-0.8	-0.7	-2.4	-2.4
		4,671.6	4,590.6	4,538.3	4,513.3	4,382.3
/GDP	%	98.7	99.9	101.8	104.9	105.2
/	%	51.0	51.5	50.3	48.4	48.8
		4,363.0	4,512.5	4,181.6	3,779.4	3,596.8
		4,330.4	4,525.3	4,129.0	3,722.5	3,531.8
		32.5	-12.8	52.6	56.9	65.0
		5,252.3	5,420.2	4,945.9	4,579.3	4,380.0
		-65.1	-75.3	61.8	26.3	64.0
/GDP	%	-1.2	-1.4	1.2	0.6	1.4
		2,707.6	1,884.6	2,990.7	2,472.4	2,052.3
/GDP	%	51.1	34.7	59.4	51.9	44.4
		12,984.7	12,771.2	13,772.9	12,563.1	11,593.0

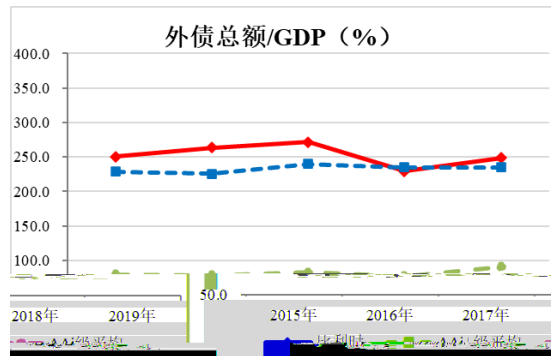
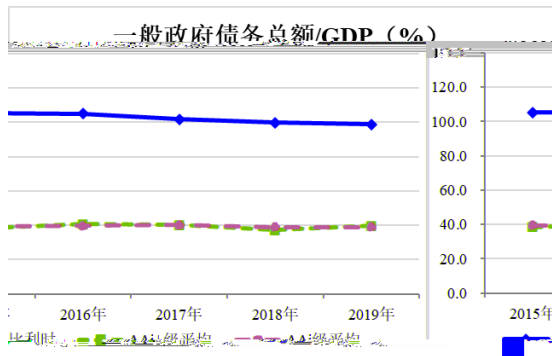
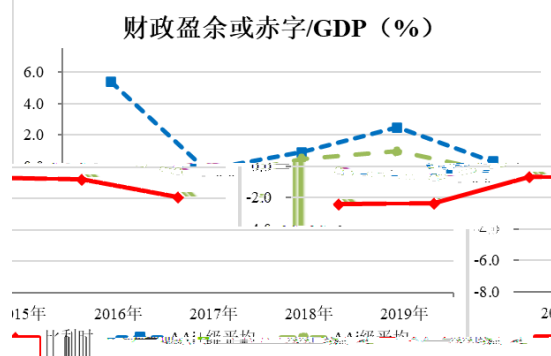
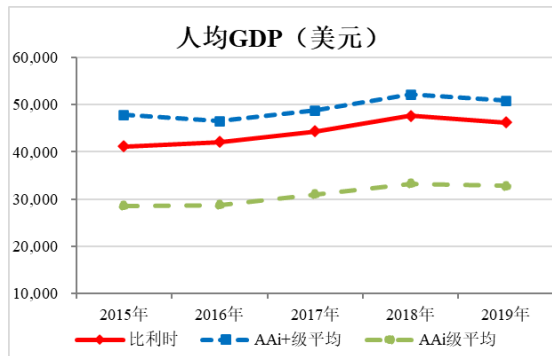
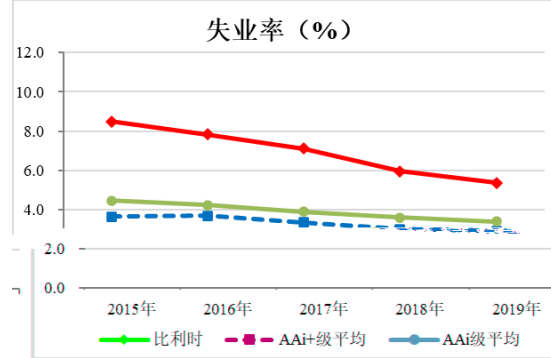
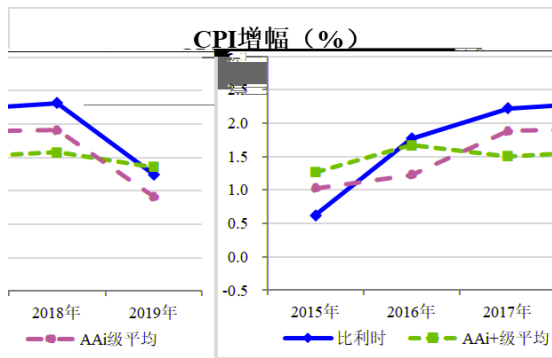
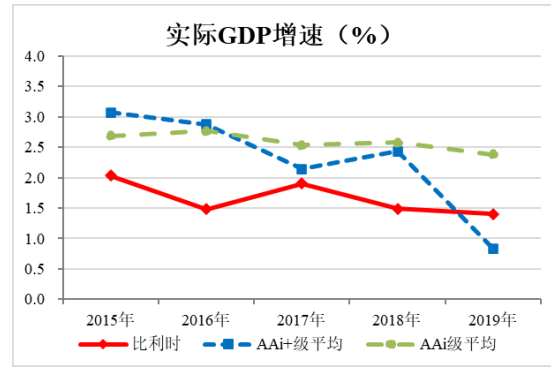
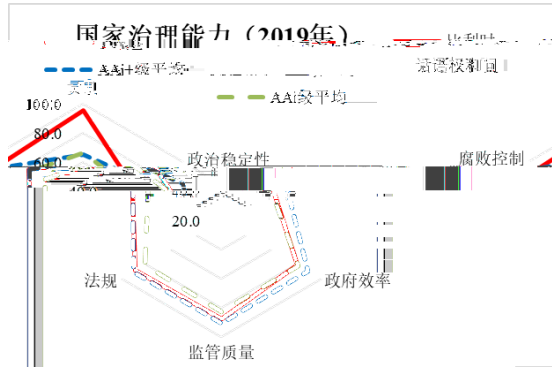
/GDP	%	245.1	235.2	273.5	263.9	250.7
		3,438.5	3,108.2	3,268.1	2,988.5	2,923.0
/	%	26.5	24.3	23.7	23.8	25.2
/	%	40.5	42.4	35.9	36.5	37.8
/	%	152.7	174.4	151.3	153.2	149.8

IMF

2 2020-2021

		2020	2020	2020	2020	2021
GDP	%	-2.0	-13.9	-4.5	-8.3	5.4
CPI	%	0.9	0.0	0.4	0.6	1.2
	%	5.0	5.0	5.1	6.1	7.6
GDP		41,419	39,984	-	43,814	50,051
/GDP	%	-14.2	-5.6	-	-11.4	-6.3
/GDP	%	104.3	115.3	-	117.7	117.1
/GDP	%	0.1	0.0	-	0.0	-0.8
/GDP	%	262.4	238.8	-	254.5	250.1

IMF



IMF

