

1

						<i>i</i>			<i>i</i>	
									<i>i</i>	
									<i>i</i>	
		发							A	
					A				A	
		发							E	
									c	
					b				c	
									e	
									a	
					b				b	
									g	
		北京市朝阳区建国门外大街 号中国人保财险大厦 层 ()								--
						--			--	
							德	德	到	
								到		

1

德

承

标

承

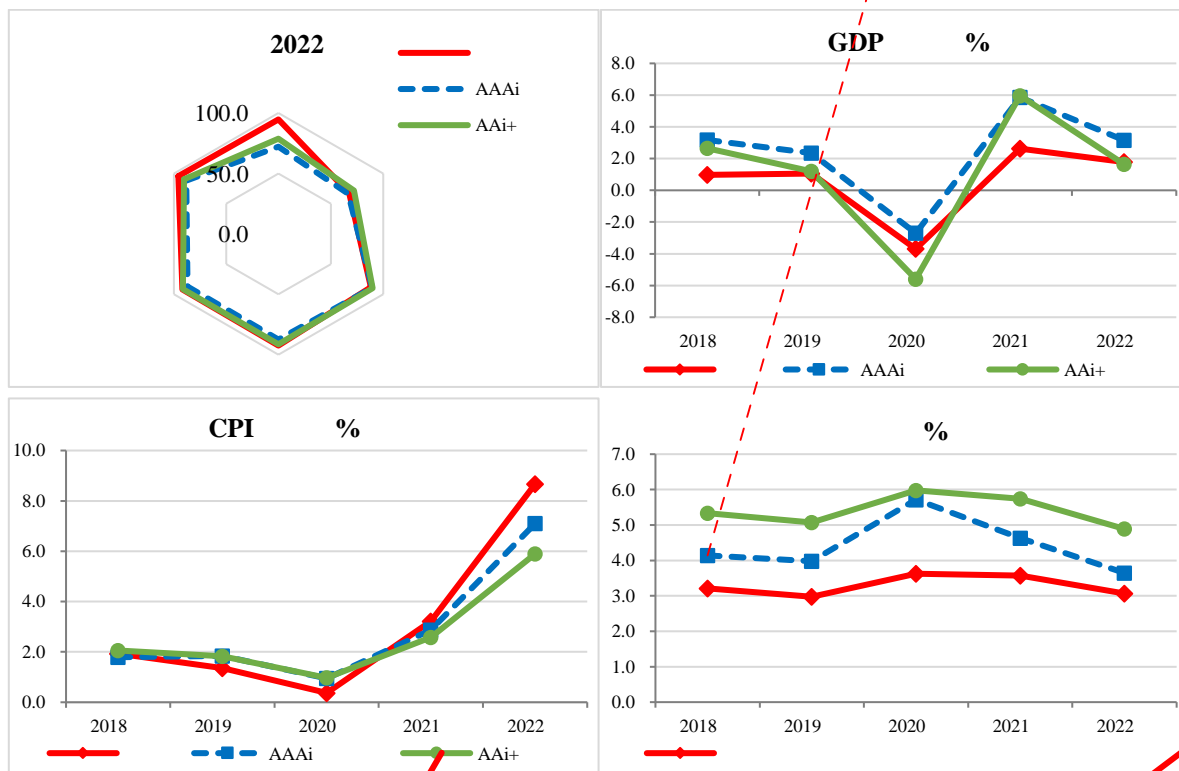
导

导

导

		2022	2021	2020	2019	2018
GDP		38,670.5	36,017.5	34,054.3	34,732.6	33,654.5
GDP		40,754.0	42,627.7	38,865.6	38,886.6	39,762.5
GDP	%	1.8	2.6	-3.7	1.1	1.0
CPI		8.7	3.2	0.4	1.4	1.9
	%	3.1	3.6	3.6	3.6	3.2
GDP		48,636.0	51,237.6	46,735.3	46,798.8	47,961.0
GDP	%	73.1	71.4	72.3	72.2	72.0
GDP	%	24.8	23.3	22.1	22.1	21.9
GDP	%	2.2	5.6	5.9	5.9	6.2
GDP	%	1.1	0.9	0.8	0.8	0.7
GDP	%	26.7	26.7	26.6	27.0	27.3
GDP	%	62.7	62.9	63.3	62.4	62.1
GDP	%	9.5	9.5	9.3	9.9	9.9
	%	19.2	18.8	19.2		
	%	1.4	-	-		
ROA	%	-	0.7	0.2	0.1	0.2
ROE	%	-	11.0	1.1	-0.4	2.4
		18,207.5	17,117.5	15,690.6	16,158.2	15,572.2
/GDP	%	47.1	47.5	46.1	46.5	46.3
		19,220.8	18,460.0	17,166.2	15,626.5	14,916.0
/GDP	%	49.7	51.3	50.4	45.0	44.3
		-1,013.3	-1,342.5	-1,475.5	531.7	656.2
/GDP	%	-2.6	-3.7	-4.3	1.5	2.0
		25,729.5	24,716.3	23,152.2	20,466.4	20,635.7
/GDP	%	66.5	66.5	68.0	58.9	61.3
/	%	70.8	69.3	67.8	78.9	75.5
/GDP	%	0.6	0.4	0.4	0.6	0.7
		20,604.1	20,213.0	16,918.2	18,331.0	18,816.4
		19,728.5	17,847.0	14,640.6	16,023.0	16,369.0
		875.6	2,366.1	2,277.6	2,277.6	2,447.4
		24,761.4	24,399.0	20,196.6	22,044.3	22,491.3
		1,710.4	3,298.4	2,741.8	3,178.0	3,161.8
/GDP	%	4.2	7.7	7.1	8.2	8.0
		29,780.9	28,597.9	26,676.5	22,820.4	20,160.5
/GDP	%	73.1	67.1	68.6	58.7	50.7

		64,414.1	69,718.0	68,594.1	57,545.2	56,888.1
/GDP %		158.1	163.6	176.5	148.0	143.1
		10,459.5	12,985.3	14,980.2	12,514.9	12,342.6
	%	16.2	18.6	21.8	21.7	21.7
/	%	38.4	35.0	29.4	38.3	39.5
		2,949.0	2,960.5	2,688.9	2,238.9	1,982.4
/	%	4.6	4.2			



数据来源: 世界银行, 联合资信整理

德	标

